

MATERIALS AND ACCESSORIES

KONE MonoSpace® Upgrade DX,
KONE MiniSpace™ Upgrade DX

MATERIALS AND ACCESSORIES FOR ELEVATOR CAR INTERIORS

This catalog presents our full selection of elevator car interior materials and accessories.

All the options included in our offering are designed to be both visually appealing and functional.

The materials and accessories presented in this catalog are available for KONE MonoSpace® Upgrade DX and KONE MiniSpace™ Upgrade DX.



reddot winner 2020

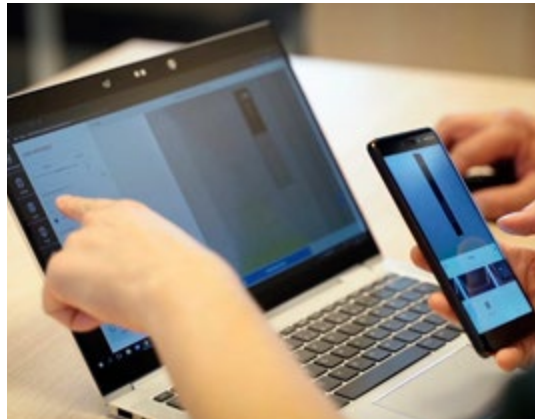
Wall finishes	3
Floor finishes	4
Door finishes	5
Ceilings	6
Standard mirrors	7
Handrails	7
Skirting	7
Tenant directories	7

Whatever type of building you're developing, we have a solution to fit your design, budget, and building-use requirements.



BUILD SMARTER

Take advantage of our new planning tools to help you save time, make the right decisions, and plan your elevator car interior down to the very last detail.



KONE CAR DESIGNER

Check out our themed design directions or create your own unique car interior by combining materials, lighting, and accessories, then bring your vision to life with 3D modeling.

KONE CAR DESIGNER MOBILE APP

Bring your elevator car designs to life with immersive virtual, mixed, and augmented reality experiences through your smartphone.

TRY OUR PLANNING TOOLS

www.kone.ae

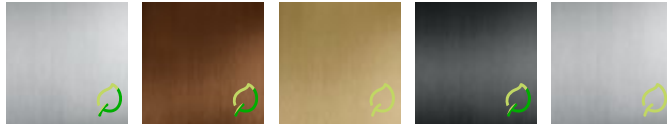


ATTRACTIVE, DURABLE WALL FINISHES

Design a car interior that's easier than ever to clean and maintain with our new range of functional materials. Our specialized anti-stain, anti-fingerprint coating helps keep colored stainless steel surfaces looking as good as new by preventing staining and making fingerprints less visible.

STEEL

BRUSHED STAINLESS STEEL



ST4 Silver brushed stainless steel
ST4AFP with anti-fingerprint coating

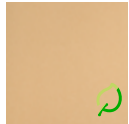
ST6AFP Bronze brushed stainless steel with anti-fingerprint coating

ST8 Champagne Gold brushed stainless steel

CB Carbon black short brushed stainless steel with Anti-fingerprint coating

ST43 Silver brushed stainless steel

METALLIC PAINTED STEEL



METP1FT Champagne, fine textured metallic painted steel

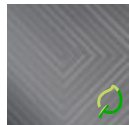
WOODEN PRINTED STEEL



WS1 Light wooden printed steel

WS2 Warm wooden printed steel

ETCHED STAINLESS STEEL



ST44S Silver Wood, etched stainless steel

TEXTURED STAINLESS STEEL



TS2 Flemish Linen

PAINTED STEEL



PP18FT Linen Brown, fine textured painted steel

LAMINATE

LAMINATE



L235 Whitened Ash, anti-microbial laminate

L236 Natural Oak, anti-microbial laminate

L239 Blackened Oak, anti-microbial laminate

L95 Natural Teak anti-microbial laminate

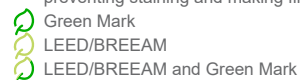
LAMINATE, 3D SURFACE



L101 Black, anti-microbial laminate

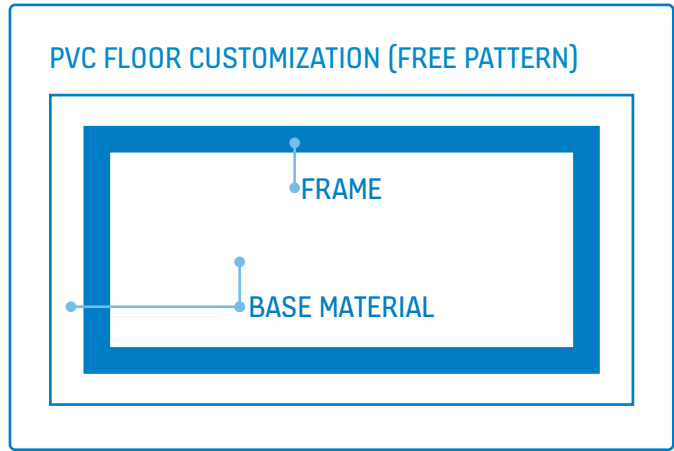
L102 Cream white, 3D anti-microbial laminate

* Anti-stain, anti-fingerprint coating:
This specialized coating helps keep colored stainless steel elevator materials looking as good as new by preventing staining and making fingerprints less visible.






FLOORS

There are several flooring options to choose from, including composite stone for long-lasting durability even under heavy use. Add the finishing touches to your design vision by creating a customized PVC or stone floor to match the building interior design.



DOOR FINISHES

Create a seamless look and feel by matching the elevator door finish with the car interior and landing entrances.

* Not available for KONE N MiniSpace™
 Green Mark
 LEED/BREEAM
 LEED/BREEAM and Green Mark

STEEL

BRUSHED STAINLESS STEEL



ST4 Silver brushed stainless steel ST4AFP with anti-fingerprint coating
 ST2 Gold brushed stainless steel ST2AFP with anti-fingerprint coating
 ST5 Copper brushed stainless steel ST5AFP with anti-fingerprint coating
 ST6 Bronze brushed stainless steel ST6AFP with anti-fingerprint coating
 ST7 Carbon black brushed stainless steel
 ST8 Champagne Gold brushed stainless steel
 CB Carbon black brushed stainless steel with anti-fingerprint coating
 ST43 Silver brushed stainless steel

PAINTED STEEL



PP10FT Pure White, fine textured painted steel
 PP18FT Linen Brown, fine textured painted steel
 PP20FT Wool Gray, fine textured painted steel

METALLIC PAINTED STEEL



METP1FT Champagne, fine textured metallic painted steel
 METP7FT Metallic Black, fine textured metallic painted steel

ETCHED STAINLESS STEEL



ST28S Silver Pop, etched stainless steel
 ST31S Silver High-rise, etched stainless steel
 ST44S Silver Wood, etched stainless steel
 ST42B* Carbon Black Circle, etched stainless steel
 ST42G Gold Circle, etched stainless steel

MIRROR-POLISHED STAINLESS STEEL



MP1 Silver mirror polished stainless steel
 MP4 Copper mirror polished stainless steel
 MP5 Carbon Black, mirror polished stainless steel

SATIN STAINLESS STEEL



MP6AFP Silver satin stainless steel with anti-fingerprint coating
 MP8AFP Carbon black satin stainless steel with anti-fingerprint coating
 MP9AFP Copper satin stainless steel with anti-fingerprint coating

INDIRECT STAINLESS STEEL



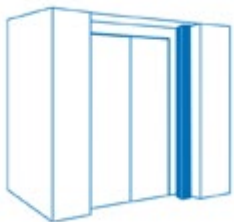
ST21S Indirect brushed stainless steel
 ST21B Carbon black indirect brushed stainless steel

TEXTURED STAINLESS STEEL



TS2 Flemish Linen
 K Scottish Quad

DOOR MAP

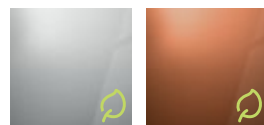


BRUSHED STAINLESS STEEL



ST4 Silver brushed stainless steel, AISI304
 ST2 Gold brushed stainless Steel

MIRROR-POLISHED STAINLESS STEEL

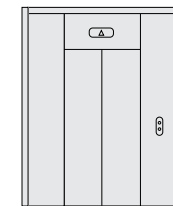


MP1 Silver mirror polished stainless steel
 MP4 Copper mirror polished stainless steel

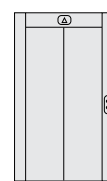
PAINTED STEEL



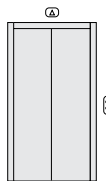
PP10FT Pure White, fine textured painted steel



Front ****



Frame



Narrow frame

CEILINGS

Our extensive range of ceilings is complemented by attractive lighting suitable for different environments.



CL70
Lighting: LED tubes
Finishing: ST4



CL72
Lighting: LED tubes
Finishing: ST4, PP10FT



CL82
Lighting: LED spot
Finishing: ST4, ST43, PP10FT, MP1



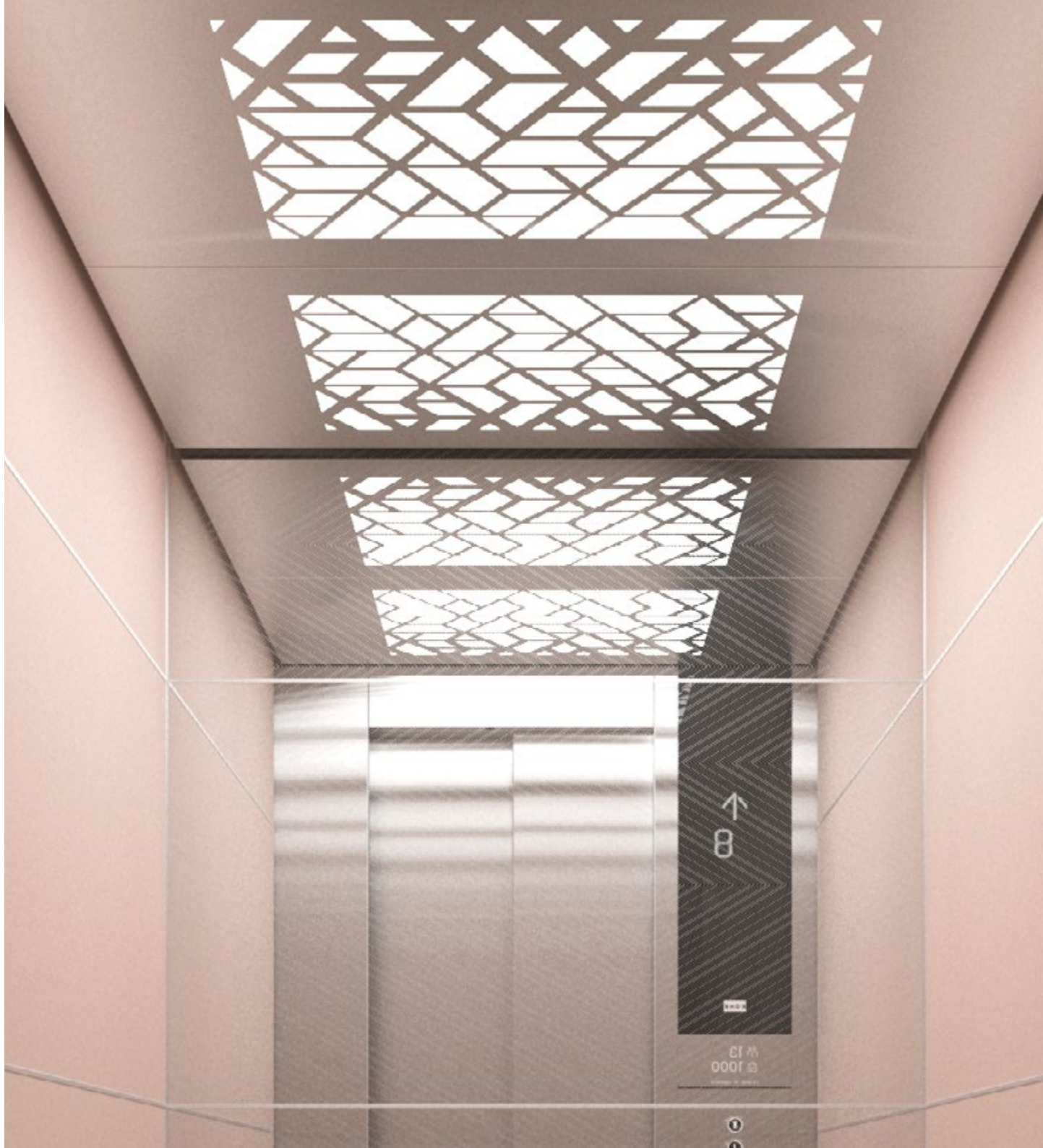
CL91
Lighting: LED tubes
Finishing: ST4, PP10FT, ST43



CL96V
Lighting: LED PCB
Finishing: ST4, PP10FT
EN81-71 compliant

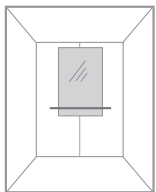


CL151
Lighting: LED panel
Finishing: ST4, MP2

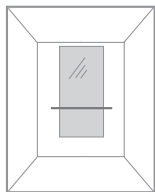


STANDARD MIRRORS

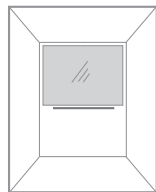
Mirrors are a great way to add a feeling of space and reflect key design elements inside the car.



MR1
Partial width
Partial height



MR1
Partial width
Mid height



MR1
Full width
Partial height

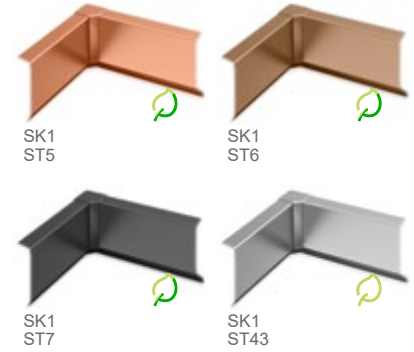
ACCESSORIES

Add the finishing touches with our wide range of elevator accessories.

HANDRAILS



SKIRTING



TENANT DIRECTORIES

KONE TENANT DIRECTORY



Materials:
Brushed stainless steel base
Tempered glass door
Brushed or polished aluminum

The tenant directory is completely customizable and can be easily updated according to your needs.

Directories can be installed either vertically or horizontally.

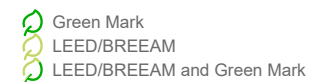
Sizes:



TD1 *



TD2 *



KONE provides innovative and eco-efficient solutions for elevators, escalators, automatic building doors and the systems that integrate them with today's intelligent buildings.

We support our customers every step of the way; from design, manufacturing and installation to maintenance and modernization. KONE is a global leader in helping our customers manage the smooth flow of people and goods throughout their buildings.

Our commitment to customers is present in all KONE solutions. This makes us a reliable partner throughout the life cycle of the building. We challenge the conventional wisdom of the industry. We are fast, flexible, and we have a well-deserved reputation as a technology leader, with such innovations as KONE MonoSpace® DX, KONE NanoSpace™ and KONE UltraRope®.

KONE employs close to 57,000 dedicated experts to serve you globally and locally.

UAE

Dubai (regional Office)

KONE Middle East LLC
U-Bora Tower,
C/O Al Abraj Str & Al Khaleej Str,
Business Bay.
P.O. Box 21474
Tel: +971 4 279 4500
www.kone.ae

Kingdom of Saudi Arabia

Riyadh (Head Office)

KONE Areeco Ltd
King Fahad Road,
Olaya District,
Al Hamad Tower, Floor 8.
Tel: +966 9200 17055
www.kone.sa

Egypt

KONE LLC
Plot no.10 B, Mohamed Naguib Axis,
Fifth Settlement,
O1 Mall, KONE 2nd Floor, New Cairo.
Tel: +20 232 44 300
www.kone.eg

Morocco

KONE Elevators and Escalators
SARLAU
Lot Marjana N6,
Sidi Maarouf, Casablanca.
P.O Box 20280
Tel: 0522 58 02 11
www.kone.ma

Qatar

KONE Elevators LLC
Ghanem Office Tower,
Building No. 54, Street No. 640,
Zone 23, Salwa Road,
Bin Mahmoud Area, Doha.
P.O. Box 37143
Tel: +974 4488 8835
www.kone.qa

Oman

KONE Assarain LLC
Hatat House B, Office 103, 1st Floor,
Wadi Adai, Ruwi 112, Muscat.
P.O. Box 1475
Tel: +968 246 570 00
www.kone.om

Bahrain

KONE Bahrain SPC
Building 767, Office number 61,
Road number: 3629,
Block number: 336,
Adliya, Kingdom of Bahrain.
P.O. Box 21303
Tel: +973 1774 9271
www.kone.bh

Kuwait

Laila Tower, 14th floor, office 3,
Salmiya, Kuwait.
P.O. Box 21119 - Safat 13072
www.kone.com.kw

Tunisia

Ensemble Mobilier Miniar,
Rue du Lac d'Ourmia,
1053 Les Berges du Lac,
Tunis, Tunisie.
www.kone.tn

East Africa (Kenya and Uganda)

KONE NAIROBI (Head Office)
Crowne Plaza Annexe, 13th Floor,
Along Kenya Road, Nairobi, Kenya.
P.O. Box 35174-00100
www.kone.co.ke
www.kone.ug

South Africa

KONE Elevators South Africa (Pty) Ltd,
20 Friesland Drive, Longmeadow,
Business Estate (South),
Edenvale 1610, Johannesburg.
Tel: +27 11 035 1800
www.kone.co.za

Türkiye

İçerenköy Mah. Değirmenyolu Cad.
No:28 Asiaofispark B Blok D:3 Kat:2
34752 Ataşehir/İstanbul.
Tel: 444 56 63
www.kone.com.tr

Kazakhstan

KONE Kazakhstan LLP
D.Konayev Street 12/1,
floor 9, 010017,
Astana, Kazakhstan.
www.kone.kz